



DIVERSIFIED
TESTING LABORATORIES, INC.
 WORLDWIDE SERVICE

“We Test Per Your Request”

336 WEST FRONT STREET
 P.O. BOX 4004
 BURLINGTON, NORTH CAROLINA 27215
 PHONE (336) 227-7710 • FAX (336) 227-1175
 www.diversifiedtestinglabs.com

March 25, 2025

Ms. Sandy DePriest
 RICHLOOM FABRICS GROUP
 100 Bailey Plant Road
 Clinton, NC 29325

Reference: Laboratory Test Report
 Lab Identification No. 63735
 Invoice No. 95056

Dear Ms. DePriest:

One (1) fabric sample, identified as **MIRTH VAPOR**, was received and tested in accordance with the NFPA 260, "Cigarette Ignition Resistance of Components of Upholstered Furniture, 2024 Edition", (Cover Fabric Test). The results are as follows:

Test Results

<u>Vertical Char Lengths</u>		
12mm	12mm	13mm

*Date Tested: March 24, 2025

*Conditioned minimum of 4 hours @ 70±5°F and >65% RH

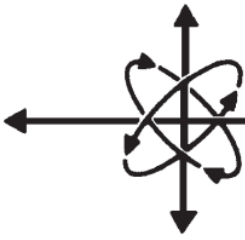
The sample submitted **meets** the requirements of the above standard and may be considered a **Class I Cover Fabric**. There were no ignitions on any of the three specimens tested. In addition, none of the three test specimens displayed a vertical char which was equal to or greater than 45 mm.

Sincerely,

Brian S. Dement

BSD/mr





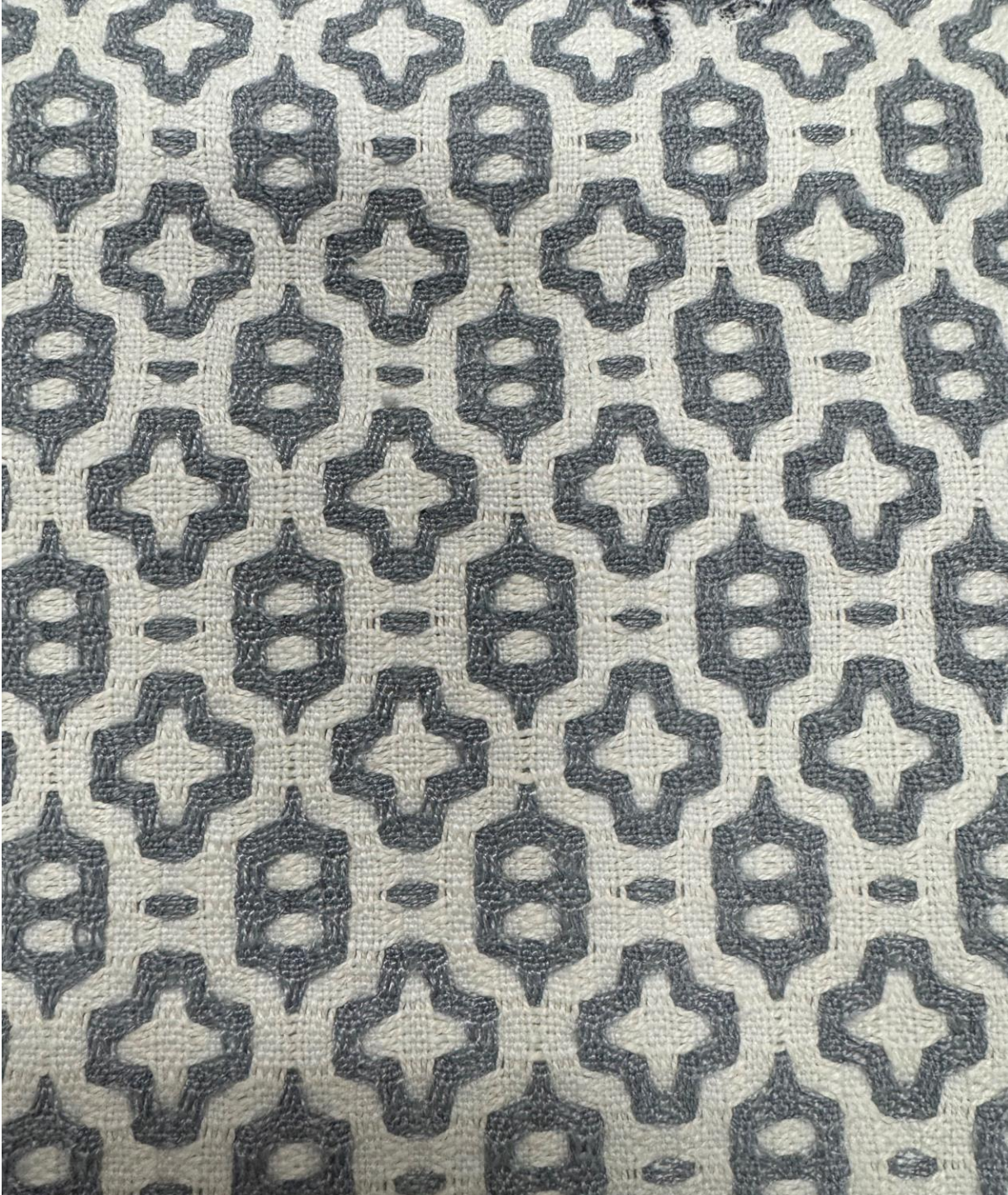
DIVERSIFIED
TESTING LABORATORIES, INC.
WORLDWIDE SERVICE

“We Test Per Your Request”

336 WEST FRONT STREET
P.O. BOX 4004
BURLINGTON, NORTH CAROLINA 27215
PHONE (336) 227-7710 • FAX (336) 227-1175
www.diversifiedtestinglabs.com

Lab Identification No. 63735

Sample Identification: **MIRTH VAPOR**





TEST REPORT

Report No. : BG:TX:1545011752-A

ISSUE DATE : 21-05-2024



MOZAMBI GM2311208PD(2242981)/CLIENT DIV

RESULTS

REQ

Testing the Smolder Resistance of Materials Used in Upholstered Furniture, Section 1: Cover

Fabric Test conducted in accordance with California Technical Bulletin 117-2013.

TB 117: 2013 Section 1: Cover Fabric

	Smouldering Time (min:sec)	Open Flaming (Yes/No)	Vertical Char Length (Inch)	Comments
Test Results:				
Specimen No.				
1	36:46	NO	0.6 Inch	PASS
2	35:19	NO	0.5 Inch	PASS
3	36:40	NO	0.6 Inch	PASS

Details of Tested Specimen:

Materials Colour: Woven Cover Fabric

Sample Size: 203mmx203mm & 203mm x 381 mm

Conditioning:

Prior to testing, the specimens were conditioned for a minimum of 24 hours, at 70 ± 5°F (21 °C ± 3°C) and less than 55% relative humidity.

The test results only to the ignitability of the sample or combination of materials under the particular condition of test. They are not intended as a means of assessing the full potential fire hazard of the materials or products in use.

PASS/FAIL CRITERIA :

1. A single mock-up test specimen fails to meet the requirements of this test procedure if any of the following criteria occurs:
 - a) The mock-up test specimen continues to smolder after the 45 minute test duration.
 - b) A vertical char length (measured as specified in step 11.9 of ASTM E1353-08a 1) of more than 1.8 inches (45 mm) develops on the cover fabrics.
 - c) The mock-up test specimen transitions to open flaming.
2. The cover fabric passes the test if three initial mock-up specimens pass the test, i.e., the cigarettes burn their full length and the mock-ups are no longer smoldering.
3. If more than one initial specimen fails, the cover fabric fails the test.
4. If any one of the three initial specimens fails, repeat the test on additional three specimens.
5. If all three additional specimens pass the test, the cover fabric passes the test. If any one of the additional three specimens fails, the cover fabric fails the test.

SUB-CONCLUSION:

The Submitted Samples meets the Requirements of Section 1 for Cover Fabric Test of California Technical Bulletin 117-2013.

Note: Test has been sub-contracted to the other SGS India, ISO/IEC 17025 accredited Laboratory

JOE No. : 2445806237

Page 3 of 4

Control No.:1545515028

This document is issued by the Company under its General Conditions of Service printed overleaf or available on request and accessible at http://www.sgs.com/terms_and_conditions.htm and and Terms and Conditions for electronic documents www.sgs.com/terms_e-document.htm. Attention is drawn to the limitation of liability, indemnification and jurisdiction issues defined therein. Any holder of this document is advised that information contained hereon reflects the Company's findings at the time of its intervention only and within the limits of Client's instructions, if any. The Company's sole responsibility is to its Client and this document does not exonerate parties to a transaction from exercising all their rights and obligations under the transaction documents. Any unauthorized alteration, forgery or falsification of the content or appearance of this document is unlawful and offenders may be prosecuted to the fullest extent of the law. The laboratory shall be responsible for all the information provided in the report, except when information and instruction for specific scope of testing is provided by the customer. Unless otherwise stated the results shown in this test report refer only to the sample(s) tested and such sample(s) are retained for 30 days only. This document cannot be reproduced except in full, without prior approval of the Company. No decision rule is applied, when comparing the measurement result(s) with the applicable limit(s) according to the specification in the respective standard or as shared by the customer.

SGS India Pvt. Ltd.

Testing Laboratory- Softlines, Ahmed Plaza, No.38/1,2, New BBMP No.88/45/45, Beretena Agrahara, Hosur Main Road, Bangalore-560100, Phone: (080) 67261400 / 67261500

Member of the SGS Group (SGS SA)